

civcon PEOPLE

Over the years, Civcon has seen some amazing custodians and colourful characters, like Johnny Imbradio, our charismatic founder, and André Botha stalwart senior site manager, who was involved in Civcon's first big project - Freddie's Gold Mine in Welkom, now retired. Then there was Sonnyboy Mdingi, a herd boy in the Transkei, who rose to the position of senior site foreman, now also retired.

In later years Innes Louw, Charles Ramsay, Edward "Power" Sebege, Wiebe Top but to name a few have all played a definitive role in putting Civcon on the map.

Another employee Civcon is hugely proud of is Victor Makgeta who was initially hired as a heavy duty truck driver. He dreamed of improving his lot in life and set about achieving his goal. He subsequently attended the Civcon "College" and has passed all of the exams necessary to qualify him as a fully fledged safety officer.

And, last but not least, Lex Henning, who picked up the reins in the early 90's. Under his leadership, Civcon's growth, diversity and reach has been nothing short of meteoric.

It's characters like these and many more that prove the adage: **"Our people are our most precious asset."**



Johnny Imbradio



André Botha



Sonnyboy Mdingi



Innes Louw



Charles Ramsay



Edward Sebege



Wiebe Top



Victor Makgeta

civcon LEX HENNING, MD, COMMENTS

On the occasion of Civcon's 30th Anniversary in March this year and on behalf of the Civcon Team, I would like to take this opportunity to acknowledge and celebrate our longstanding relationship with our many clients. We at Civcon are very proud to be associated with the major mining and industrial corporates in Southern African.

Through determination, commitment and hard work we have been able to maintain our leading edge and been able to ensure customer loyalty and satisfaction.

Our strategy for maintaining excellence in all we do is comprehensive. We ensure that we keep Civcon at the cutting edge of technology by continuously upgrading our operating systems, on-going training of staff at every level, supply chain management, project management and client feedback surveys.

Civcon has been ISO 9001/2000 quality management system certified since 2005 and has been recently recertified to the upgraded ISO 9001/2008 quality management system and we go out of our way to ensure that our work is not only compliant with this certification but that it exceeds these requirements.

Keeping an eye on what is happening on the ground during and immediately after a project is not where the job begins and ends. We strive for the highest levels of safety and training for our staff and we source the latest technology from the best suppliers. We ensure this commitment to excellence permeates through Civcon. We also place a premium on health and safety - it is an extremely important part of any civil engineering work. To that end, we are in the process of becoming OHSAS 18001 and ISO 14001 compliant, so that we conform to international safety and environmental standards and are able to work for anyone, anywhere, anytime. We have been able to secure an ample order book for the 2011 financial year.

Over the years I have emphasised the importance of clear communications. I truly believe it is an absolutely crucial component of a successful company.

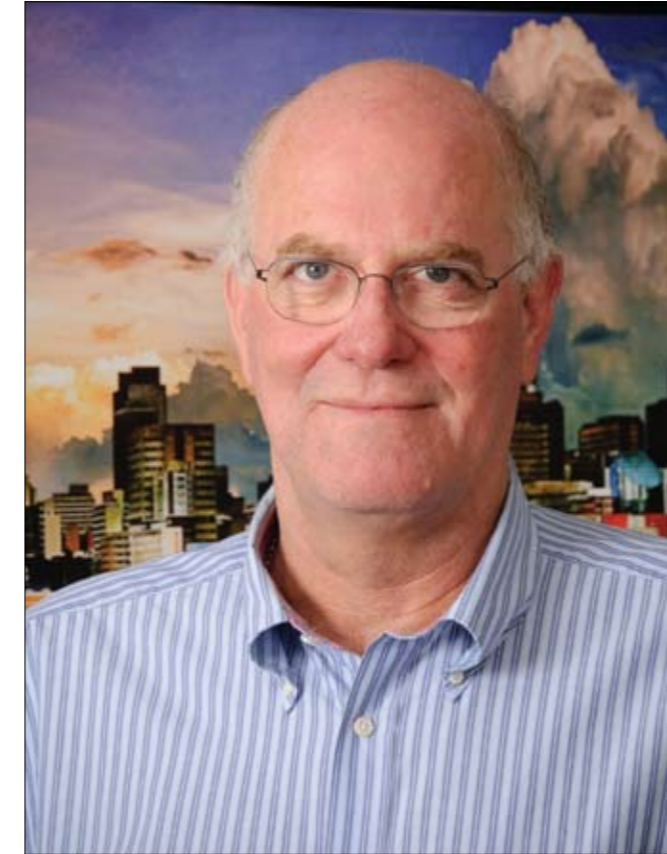
I have always believed that Civcon should not be 'all work and no play' so as an incentive to site workers and in recognition of the huge effort they put in, I am giving the highest achieving workers tickets to the 2010 FIFA World Cup! I know that it is the work of our men on site that really makes us achieve greater heights as a company and I'd like to reward that loyalty.

I believe that loyalty is not created by money, but built through camaraderie. While competition has stiffened due to the effect of the recession, Civcon is still a well-respected entity in the civil engineering industry. Our reputation within the sector has brought us a contract in the growing area of power provisions; this year we are working on a waste, dirty and storm water management system at the Medupi power station for Eskom.

It also makes me very, very proud to acknowledge members of staff who have been with Civcon since the very beginning as well as some in management who started as labourers and worked their way up through the ranks. I believe this demonstrates Civcon's commitment to continuous professional development.

We've set ourselves apart at grass roots level, and show the same level of dedication to our workforce as we do to our clients.

In closing, I'd just like to add that staying in business for 30 years is no walk in the park! It's however, a tribute to all of the people in our employ - the mutual respect and trust that we have cultivated and enjoyed over the years. I believe that is what gives our clients the confidence to continue to do business with Civcon.



civcon OFFICES & PLANT



Old Head Office, Industria North



CIVCON Head Office, Clayville Gauteng



New plant 2008



"Old Faithful" 1981 Nissan Tipper



New Semi-trailer 1998



New plant 2008

"The only place where success comes before work is a dictionary." - Vidal Sassoon 1928

civconnection

CIVCON CELEBRATES 30 YEARS OF CONSTRUCTION EXCELLENCE 1980 - 2010

In 1980, in the Free State mining town of Welkom, Johnny Imbradio opened a small civil construction business to service the mines in that area. 30 years later, Civcon Civil Engineering, a R400m construction force, is involved in contract mining, mine infrastructure development; large industrial projects; general civil engineering; bulk earthworks and turnkey projects. It has an operational footprint of project involvement, not only extensively within South Africa, but throughout the entire Southern African region.

In the 3rd quarter of 2009 Erbacon Investment Holdings Limited acquired Civcon and simultaneously Medu Capital acquired a shareholding in EIH, resulting the EIH Group being fully compliant with the latest BEE codes of practice. Dave Erskine, CEO of EIH Group and Nhlenganiso Mkwana, director of Medu Capital believe that the merged group has the opportunity to play a meaningful role in South Africa's infrastructural development.

Lex Henning says "This is the culmination of a decision taken by Civcon's directors 18 months ago, to become BEE compliant. We are very proud to be associated with EIH, Medu Capital and PSG and look forward to a long and mutually beneficial relationship"



"The only thing I regret about my past life is the length of it. If I had to live my life again, I'd make the same mistakes, only sooner." - T Bankhead 1950



Tel: +27 0861 CIVCON Email: info@civcon.co.za www.civcon.co.za



The Erbacon Group

1991

- Freddie's Mine No.1 Shaft

R2,178,852.99 - Our first big cheque that couldn't even keep Trust Bank happy



1995

- 1 Office block in Rivonia for 5th Avenue Properties



1996

- 2 Packaged explosive manufacturing facility & magazines for BME



1997

- Katlehong pipe bridge for Rand Water Board
- Washing plant, New Clydesdale Colliery
- Compressor house - Freddie's Shaft
- Theunissen Sewage Purification Works
- Bulk earthworks for rail connection Harmony Gold Mine
- 3 Chromate plant - African Chrome
- HMS Plant - Tavistock Collieries
- Briquetting plant Heckitts
- Reservoirs for Anglo Platinum



1998

- Granulator plant Omnia Sasolburg
- Outfall sewer - New Vaal Collieries
- Explosive factory for BME
- 4 Phase II Greenfields Project for African Products
- Vaalkop pipeline for Magalies Water
- Lenasia bridge for Gauteng Roads Agency
- New stockpile tunnel for Greenside Colliery
- Bulk cement blending facility Afrisam
- CIP conversion plant and 3ML reservoir for Anglo Gold
- 5 Railway line and bridges for Harmony Gold
- Fairview Biox Ext.
- 6 Compressor house President Brand Gold Mine
- Concrete Raisebore for Impala Platinum



1999

- No.9 shaft infrastructure Impala Platinum
- Crusher and tip for KalGold
- 7 Refrigeration plant, Beatrix Gold Mine
- 3x liquid fertilizer plant for Omnia
- 8 Mill foundation and rock silo, Oryx Gold Mine



2001

- 9 Modikwe Platinum - decline shaft
- Contaminated iron ore plant at Beeshoek for Avmin
- 10 Cement blending plant Afrisam Roodepoort
- Environmental water control system for Anglogold
- Rehabilitation of C-Rack oily water sewer, Sasol



2002

- 11 Design & construct multi product silo loading facility and overland conveyor for Grindrod Logistics Richards Bay
- 12 Ext. to Kleinkopje Colliery
- Shaft deepening Adit C, Onverwacht Hill



2003

- New filter building at Mondri Felixton, Delkor
- Central shaft decline Modikwa, Anglo Platinum
- Stormwater control, Zincor
- 13 New Rock phosphate conveyor and tippler for Grindrod Logistics Richards Bay
- New reservoirs Amandelbult, Anglo Platinum



2004

- Civil works Project Bella, Krugersdorp for SAB Miller Project
- 14 Grootgeluk Coal Prep Plant
- Civil works for new 6ML Jet-A1 storage facility, OR Tambo Airport



2005

- Tip station for Koornfontein Coal Mine
- Haul roads Block 6, Kriel Colliery
- Design and construct 4500t coal handling silo - Mooikraal, Sasolburg for Sasol Mining Limited

2006

- New mill block for Target Gold Mine
- Overland conveyor, Goedehoop Colliery
- 15 Mid-Vaal Ozone plant for Mid-Vaal Water Co.
- Grootgeluk Coal Mine, Ellisras - prep plant for Exxarro
- Union Chrome Plant, Rustenberg - Civil works for Anglo Platinum



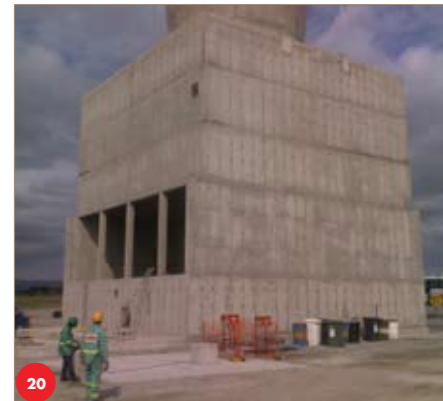
2007

- New feedstock system for Xstrata Coal
- New pipe bridge, Potgietersrus Platinum
- Turffontein refrigeration plant
- Front end civil works for Eland Platinum process plant



2008

- 16 Gold & Uranium facility Ezulwini for First Uranium
- Paardekraal refrigeration plant, Anglo Platinum
- WCM crusher building Waterval smelter for Anglo Platinum



2009

- New bridge Katlehong for Gauteng Roads Agency
- 17 New brattice wall South Deep (tallest free standing simple structure in the world) for Gold Fields of SA
- Grootgeluk - extension to coal stock yard - Exxarro
- Phase 1B - Gold & Uranium facility Ezulwini for First Uranium
- 18 New 50Tshaker for Scaw Metals
- 19 Umtu Shaft project, Kalagadi Manganese



2010

- 20 New refrigeration plant, Townlands for Anglo Platinum
- 21 Construction of decline and roadway for shaft, Elands Platinum
- 22 Construction of raw water reservoirs, Medupi power station for Eskom
- Construction of Dorstfontein coal mine for Total Coal Mine